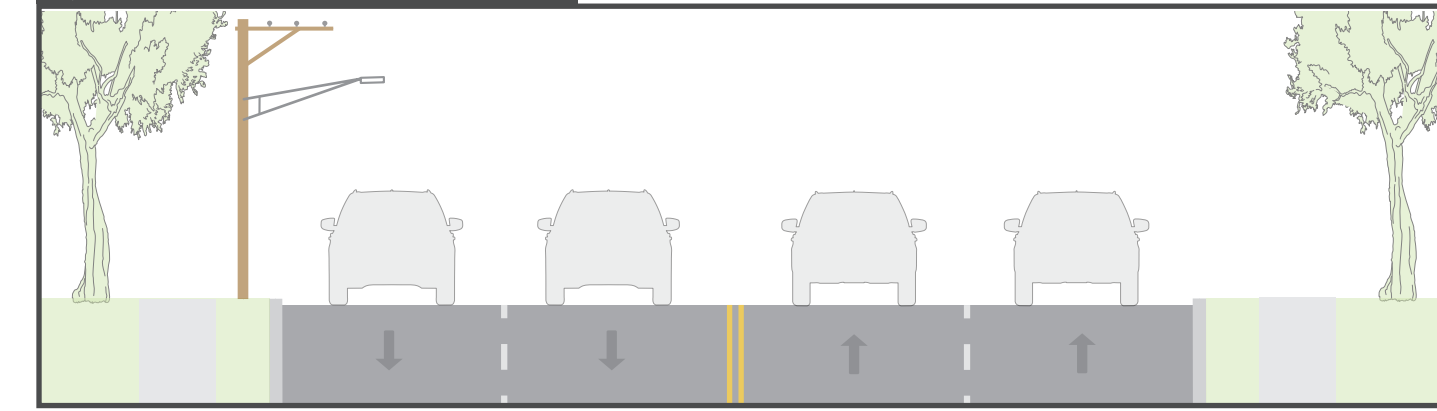


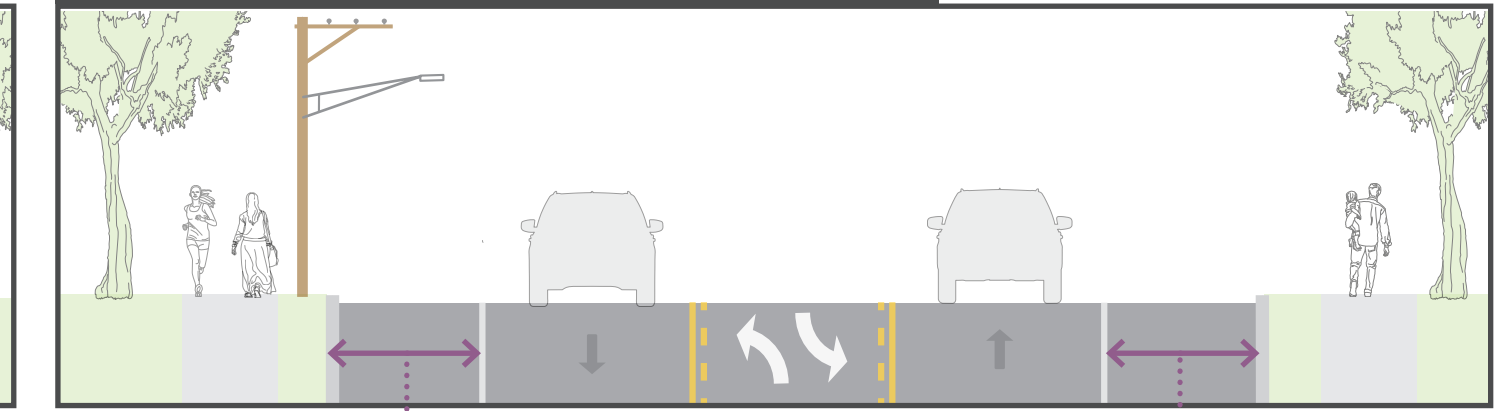
Cheltenham Avenue Corridor Study

Future Intersection Operations: No Build vs Road Diet

Typical Cross-Section

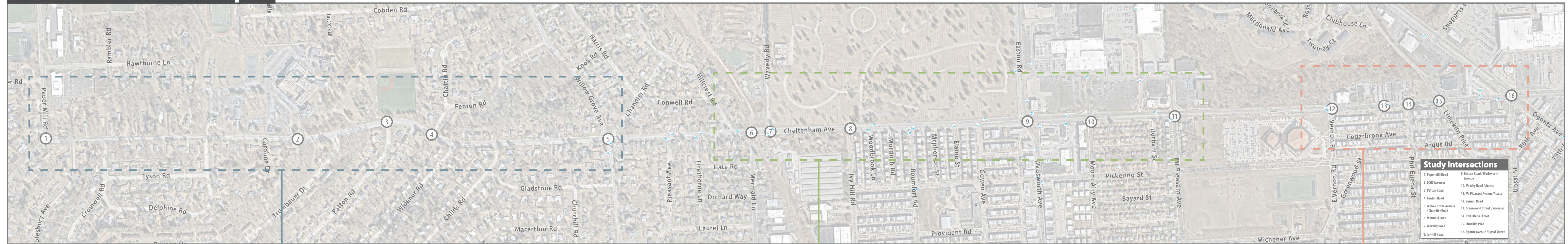


Sample Road Diet Cross-Section

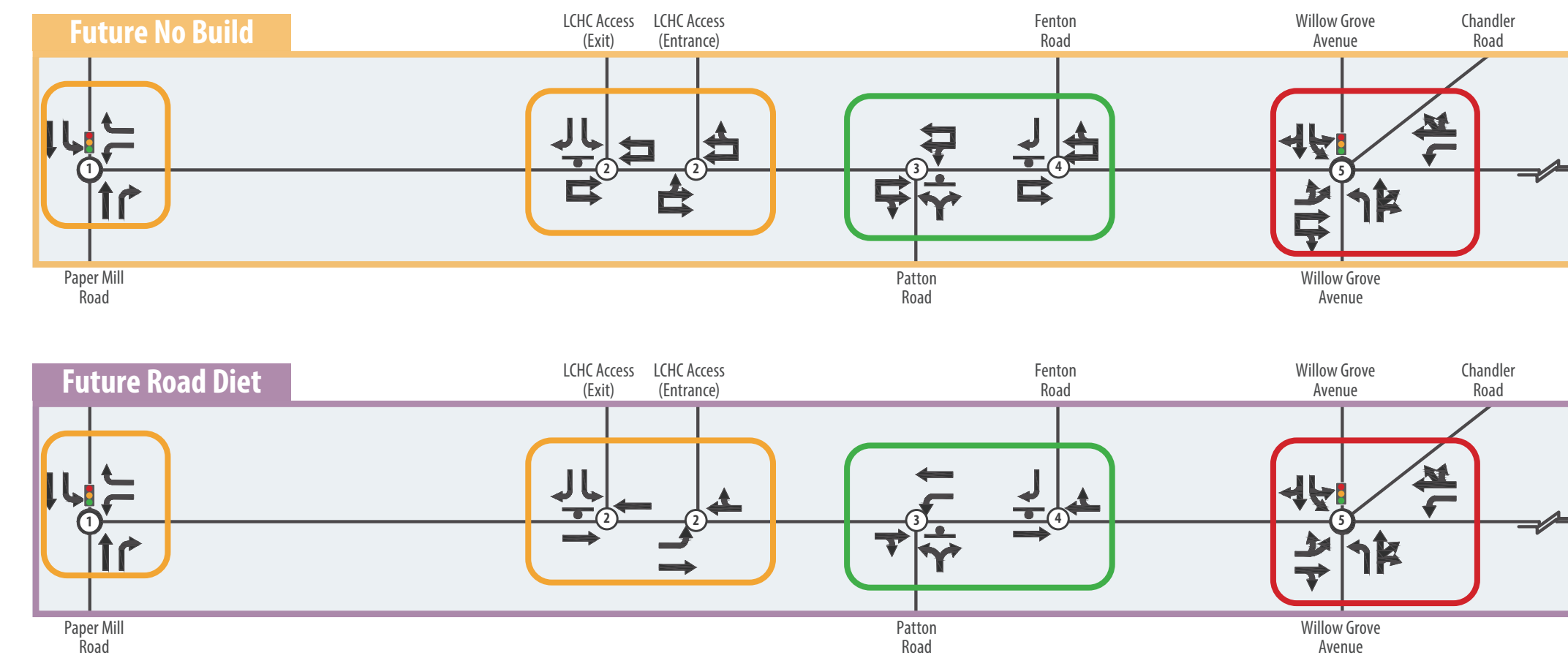


- Additional Space for:
- Bike lanes
 - Bus lanes
 - Curb extensions
 - Wider sidewalks
 - Parking
 - Etc.

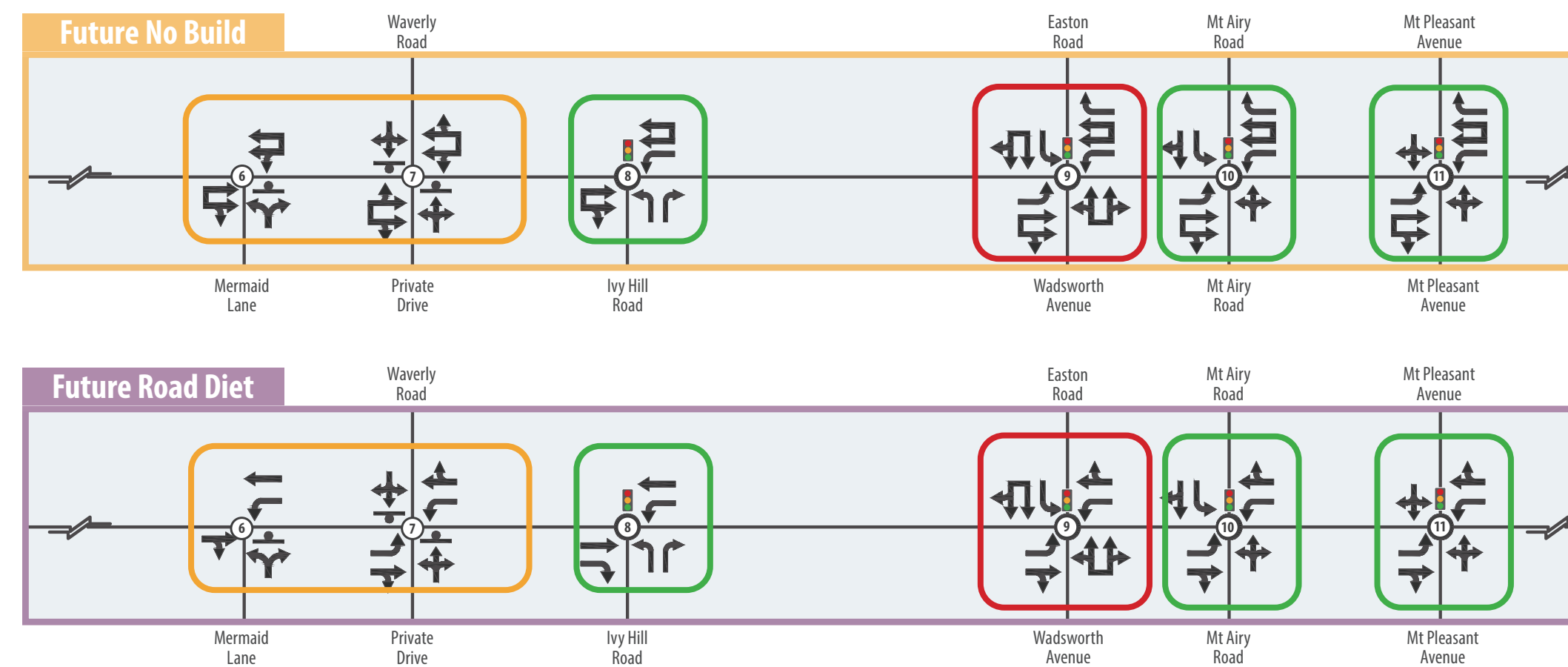
Corridor Overview Map



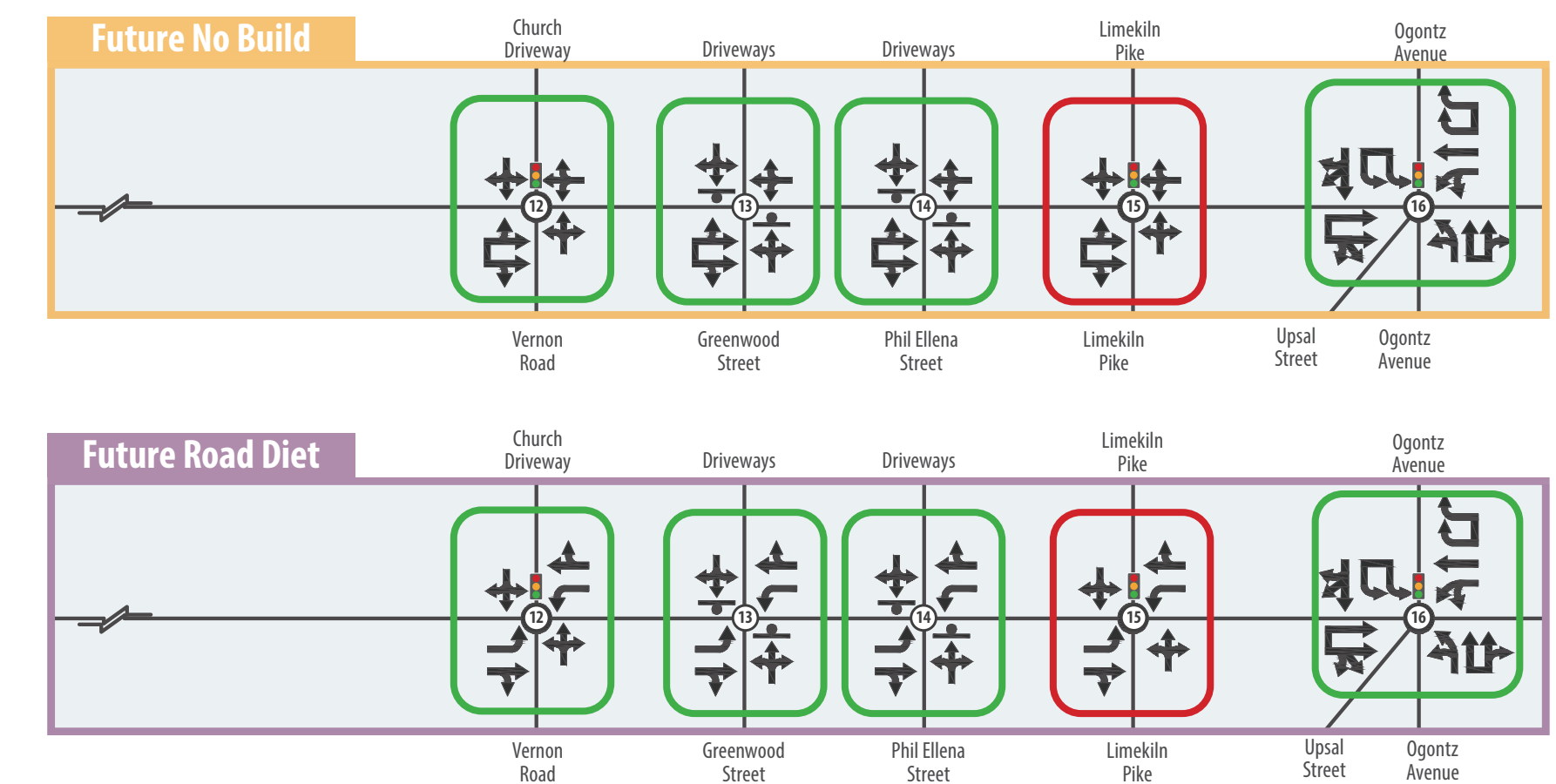
Intersections 1-5



Intersections 6-11



Intersections 12-16



Level of Service

- Acceptable Flow/Delays; no major changes
- Some increased delays; needs more study
- Constrained Flow/ Longer Delays; capacity needed

Additional Considerations

- Paper Mill Road
 - » Investigate Geometric/Safety modifications
- LCHS Access
 - » Consolidate driveways
 - » Traffic signal
- Willow Grove
 - » Maintain current lanes
- Along corridor
 - » Climbing lanes eastbound
 - » Sidewalks
- Mermaid and Waverly
 - » Separate side street turn-lanes
 - » Realign to form one intersection
 - » Traffic signal or roundabout
 - » Cresheim Valley Trail Crossing
- Easton Road/Wadsworth Ave
 - » Northbound left-turn lane
 - » Bus stop relocation
- Along corridor
 - » Median for access management
- Limekiln Road
 - » Separate left-turn lanes
- Ogontz
 - » Transition back to existing cross section
- Along corridor
 - » Median for access management
 - » Parking lot cross easements